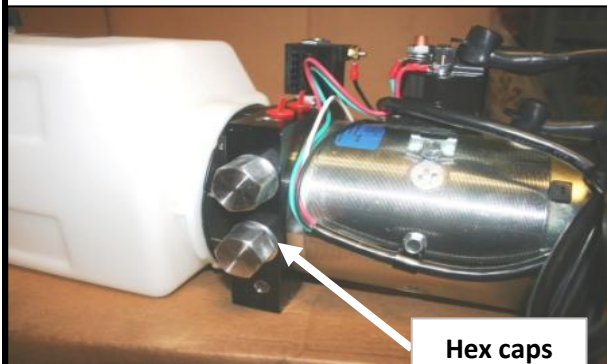


DownEaster

Pressure adjustment bulletin for electric/hydraulic pumps

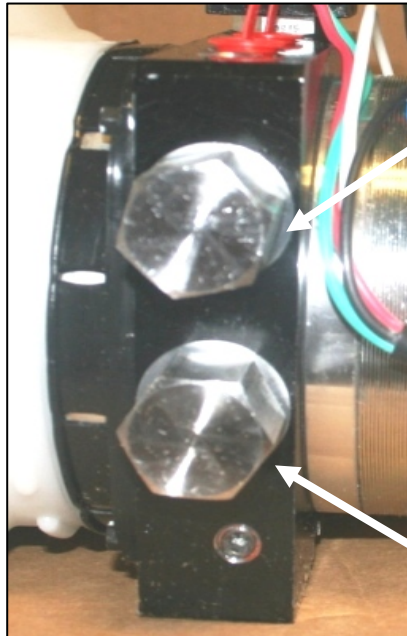
WARNING! Before any adjustments or access to pump, secure body using factory safety prop. A secondary safety lock/support prop is also recommended. Failure to support the body while accessing pump may result in personal injury or death!

SPX / Stone models



Hex caps

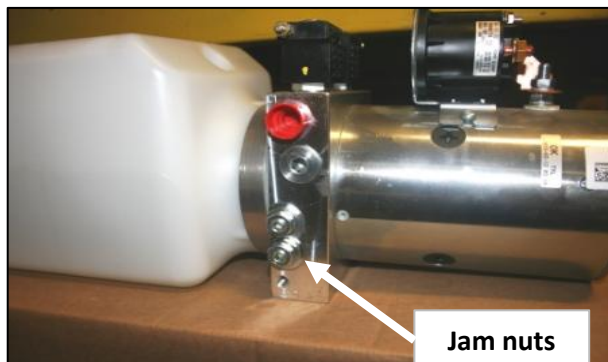
The two hexagonal caps **must be removed** to access pressure screw.
Approximately 1/4 turn **CLOCKWISE** will turn up pressure by 400-500 PSI.
DO NOT go past 1/4 turn! Failure to pump, hoses and seals may occur.



Down pressure
set @ 1,200 PSI

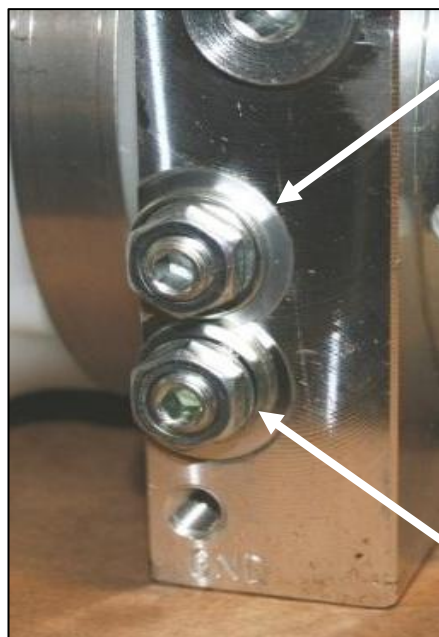
Up pressure
set @ 2,800 to
3,200 PSI

Bucher models



Jam nuts

The two 9/16" wrench size jam nuts, **must be loosened** to access the 3/16" Allen head pressure screw.
Approximately 1/4 turn **CLOCKWISE** will turn up pressure by 400-500 PSI.
DO NOT go past 1/4 turn! Failure to pump, hoses and seals may occur.



Up pressure
set @ 2,800 to
3,200 PSI

Down pressure
set @ 1,200 PSI