

# About Us

Welcome to Downeaster Manufacturing!  
Based in the heart of Maine, we're a family run business that has proudly served the truck equipment industry for over 40 years.

Specializing in truck bodies, sand spreaders, and roll-off truck systems, we are committed to delivering products that reflect exceptional craftsmanship and durability.

Our dedication to quality ensures that our solutions meet the needs of the hardworking individuals who rely on them every day.



## Interchangeable Truck Body Systems

## Contact Us



207-751-3393



[www.downeastermfg.com](http://www.downeastermfg.com)



[jason@downeastermfg.com](mailto:jason@downeastermfg.com)



10 Recycle Dr Topsham, ME 04086



## Swap Hogg Roll-Off Units

### 10' Roll-Off Frame

- 9' Truck Frame, 60" CA
- Weight: 1,066 lbs

### 12' Roll-Off Frame

- 11' Truck Frame, 84" CA
- Weight: 1,150 lbs

### 14' Roll-Off Frame

- 13' Truck Frame, 108" to 120" CA
- Weight: 1,646 lbs

### 15' Roll-Off Frame

- 14' Truck Frame, 120" to 138" CA
- Weight: 1,688 lbs

Electric System Shown



## Swap Hogg Dump Bodies



Weight: 1,800 & 2,015 lbs



Weight: 1,900 & 2,160 lbs

- Available in 9' and 11'
- 3-5 yard
- 10 GA flooring
- 10 GA side plates
- 13" high sides
- 24" high drive on tailgate w/ latch
- 38" bulkhead
- Front handle release lower latch
- 4 D-rings
- Steel rear rollers
- PPG cured paint w/ corrosion resistant epoxy primer
- Available with 13" drop sides

## Swap Hogg Containers



Weight: 2,070 lbs



- Available in different sizes
- Swing door & barn door
- 10 GA steel floor
- 12 GA siding
- 3" channel crossmembers
- 3" front & side top rails tubing
- Heavy duty door hinges
- Steel rear rollers
- PPG cured paint w/ corrosion resistant epoxy primer
- Chipper and storage containers available

## Swap Hogg Platform Bodies

### Fab Frame



- Available in 11', and 15'
- 5" long sills
- Build your own body
- Rear rollers separate
- \*Need to cut down 11' for 9' fab frames
- Weight: 350 & 470 lbs

### Multi Deck Platform



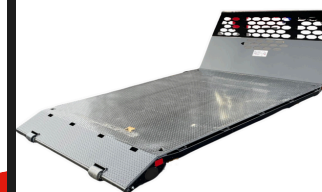
- Available in 9' and 11'
- Removable leg stands
- 4 D-rings
- 11 GA smooth steel floor
- External stake pockets w/ rub rails
- Weight: 995 & 1,115 lbs

### Platform Body



- Available in 9', 11', and 14'
- 38" bulkhead
- External stake pockets w/ rub rails
- 10 GA smooth steel floor
- Weight: 1,285 & 1,510 lbs

### Flatbed w/ Dovetail



- Available in 9', 11', and 14'
- 38" bulkhead
- 16" dovetail
- External stake pockets w/ rub rails
- 1/8" tread plate floor
- Weight: 1,265 & 1,490 lbs

